



# B-HERT: Modelling the Future Diversity in the VET Sector

## **The *Tasmanian Polytechnic* education model...**



Belinda McLennan  
CEO, Tasmanian Polytechnic  
16 November 2009

# SOME TASMANIAN DATA

TCCI: 19 August 2009

Data Source: [ABS](#), [RBA](#) and [DCAC](#)

Tasmanian  
**Polytechnic**

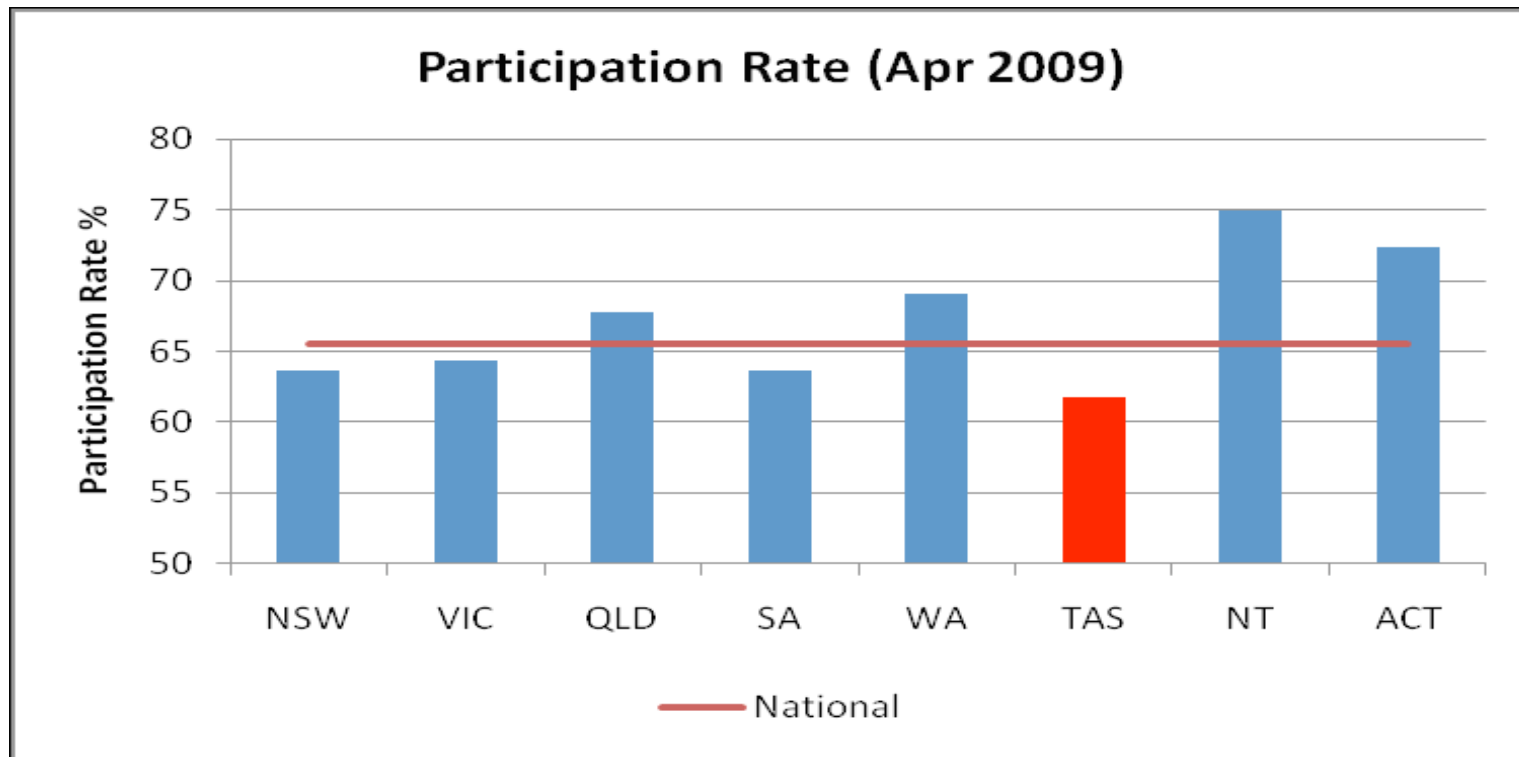
- Population Tasmania (2009) – 500,542
- Workforce Size Tasmania – July 2009 – 234,300 (46.8% of population)
- Unemployment Rate (National) – July 2009 – 5.9%
- Unemployment Rate (Tasmania) – July 2009 – 4.8%
- Participation Rate (National) – July 2009 – 65.3%
- Participation Rate (Tasmania) – July 2009 – 60.7%
- Average Weekly Earnings (National) – May 2009 – \$923.40
- Average Weekly Earnings (Tasmania) – May 2009 – \$787.40



| <i>Constraints on Business growth – priority issues</i> | <i>September Quarter 2007</i>                       | <i>June Quarter 2009</i>                            | <i>Move - ment</i> |
|---|---|---|--------------------|
| <b>1.</b>   | <b>Availability of Suitably Qualified Employees</b> | <b>Availability of Suitably Qualified Employees</b> | <b>-</b>           |

TCCI Survey of Members

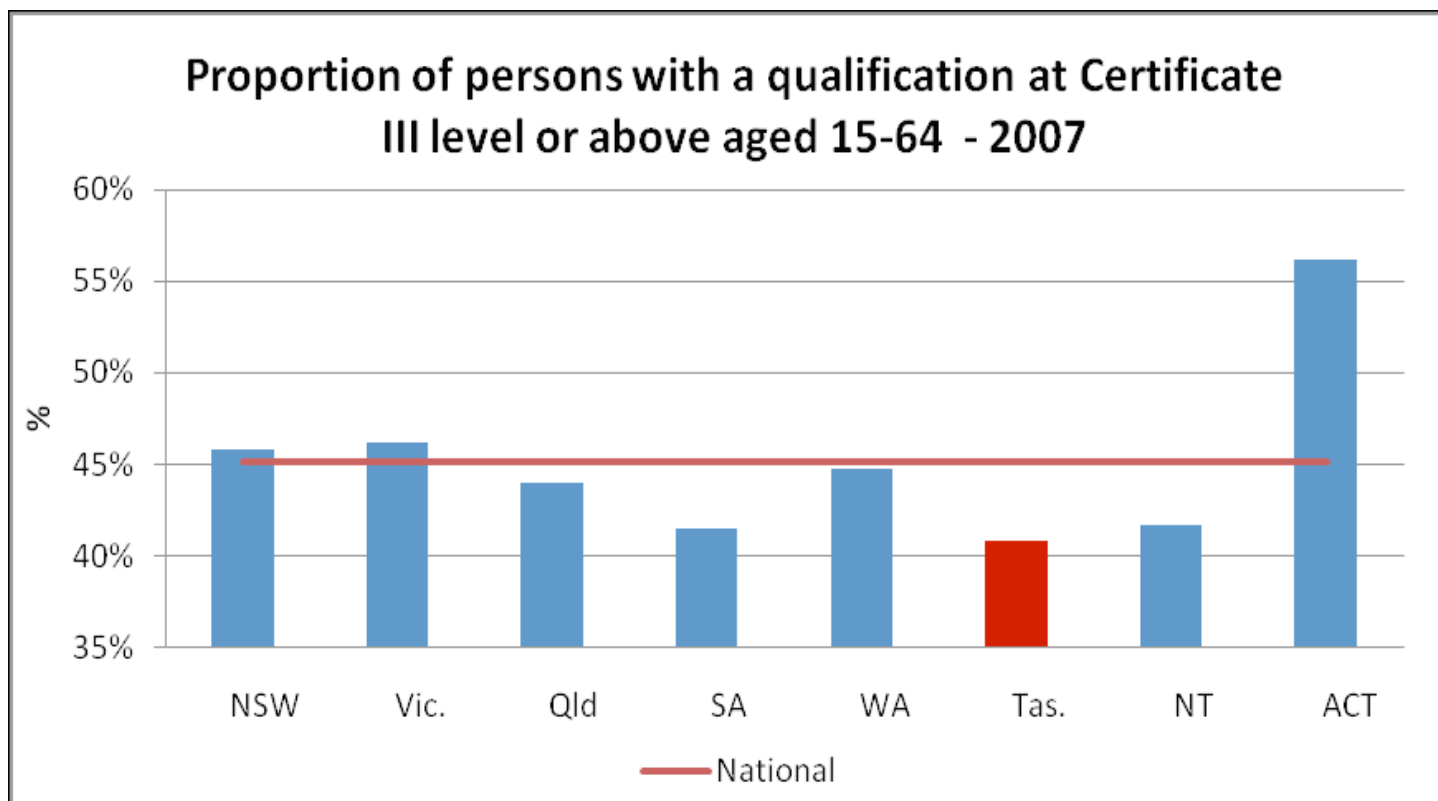
# WORKFORCE PARTICIPATION LOWER



- Workforce Productivity at about 80% of national average

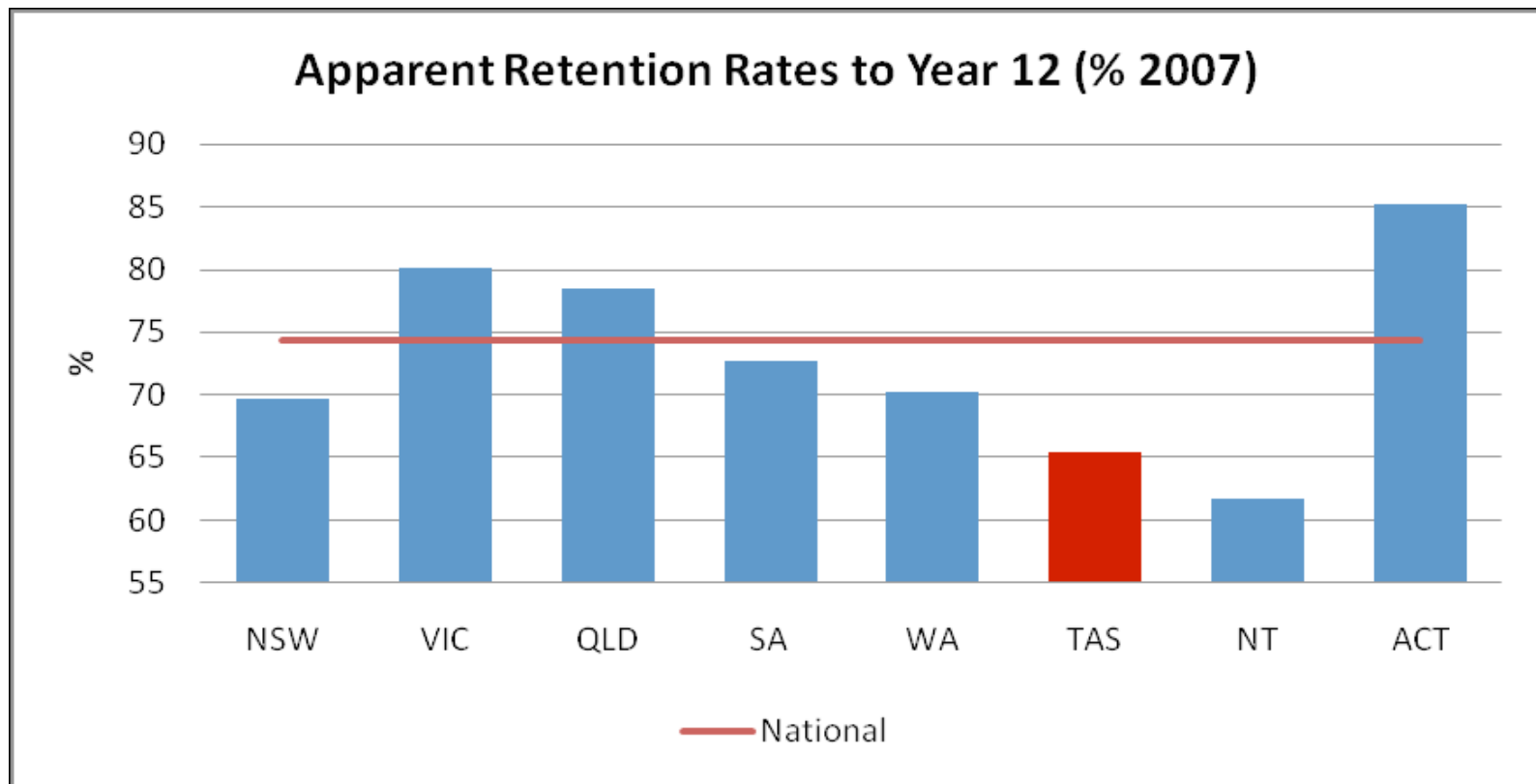
TCCI June 09

# QUALIFICATIONS LOWER



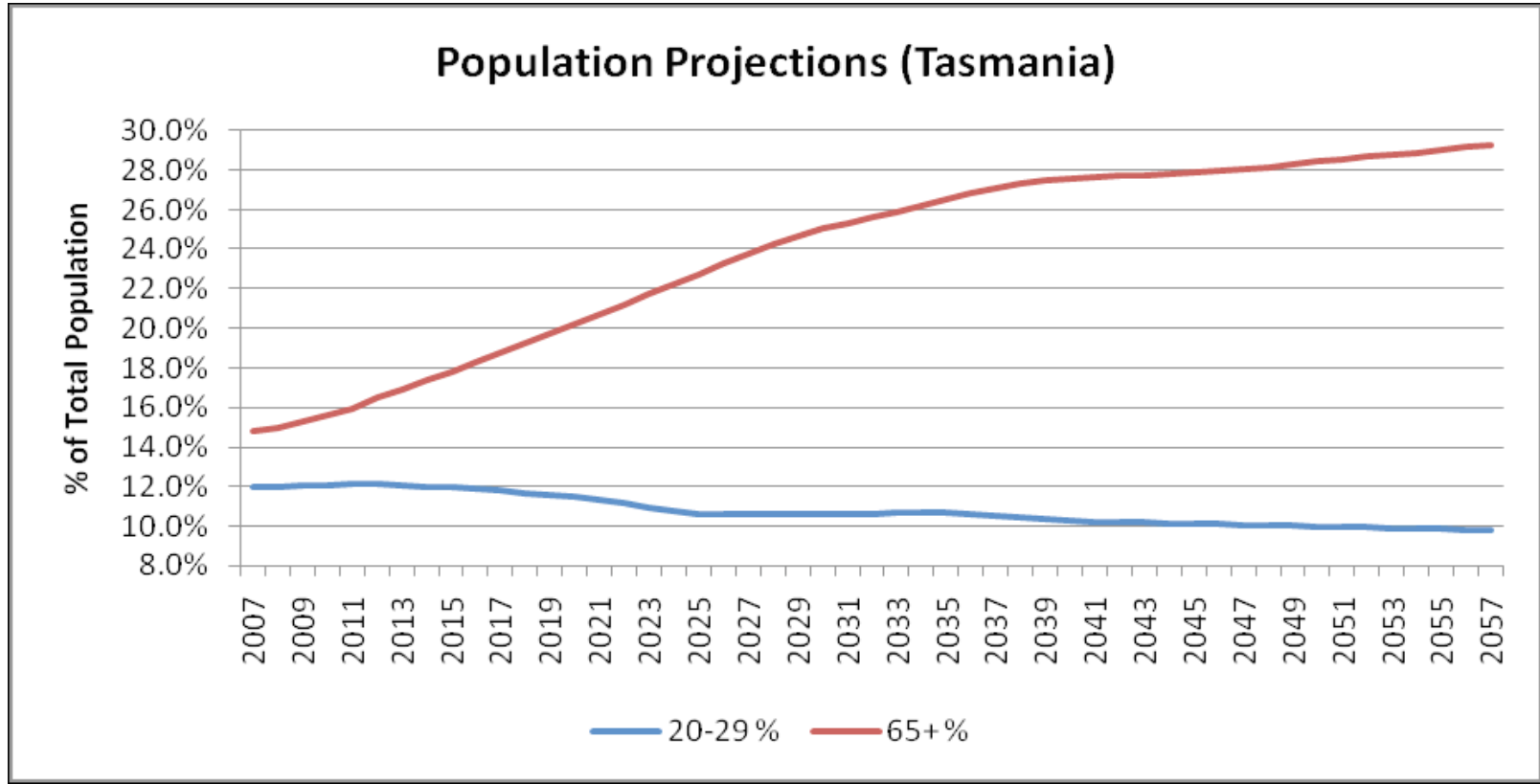
TCCI June 09

# RETENTION RATES LOWER



TCCI June 09

# POPULATION AGEING, YOUNG PEOPLE NUMBERS FALLING





FROM...

SENIOR COLLEGES x 8 and Regional HS

TAFE TASMANIA

INDIVIDUALS (UNIVERSITY)

INDIVIDUALS (CAREER)

INDIVIDUALS (CAREER)

EMPLOYEES (EMPLOYERS)

Pathway Planning Yrs 8-10

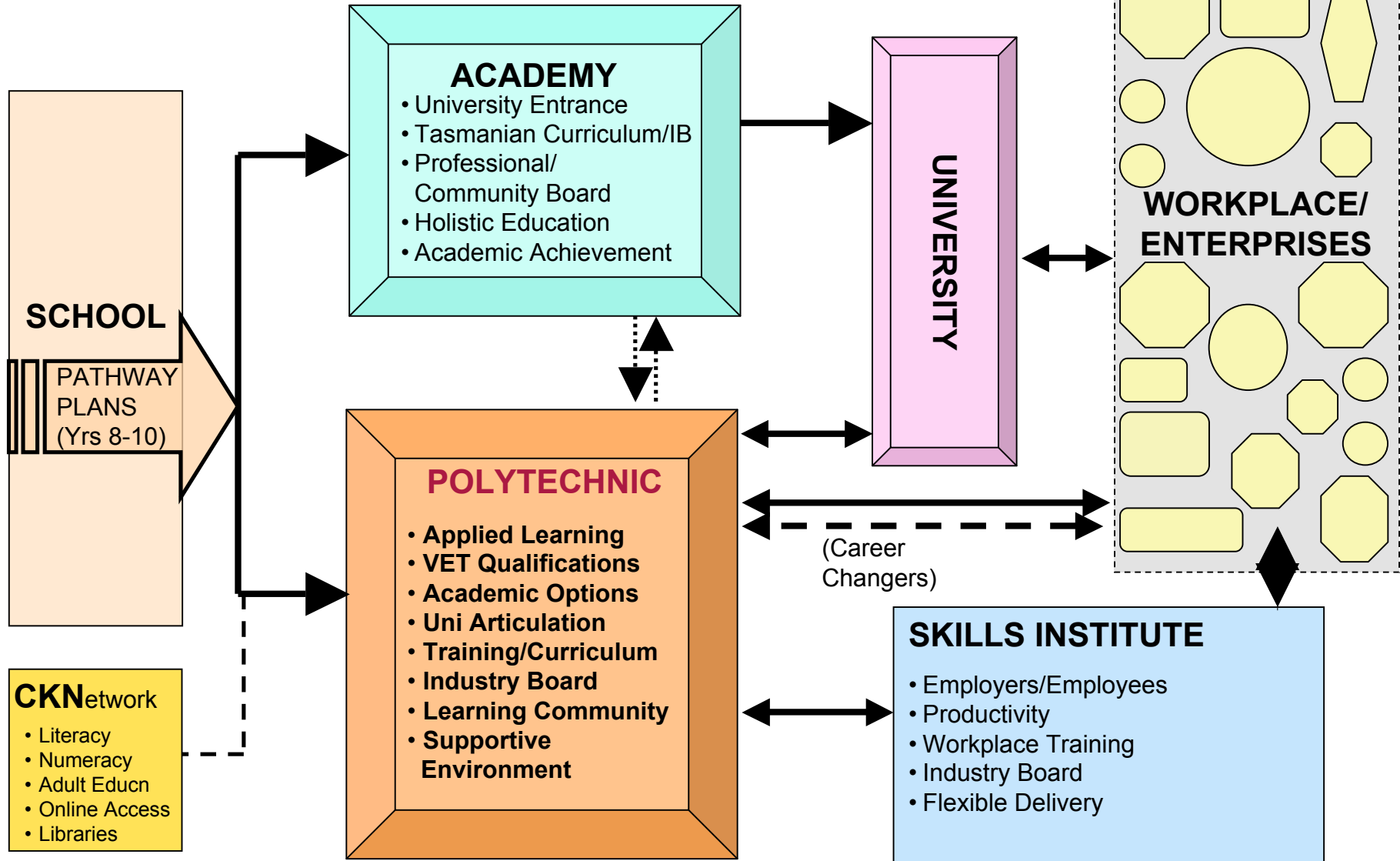
TO.....

Tasmanian Academy

Tasmanian Polytechnic

Tasmanian Skills Institute

# QUALIFICATIONS and SKILLS PATHWAYS



# ***CORPORATE PLAN***



## **OUR VISION**

Our learners achieve more productive and fulfilling lives as a result of their Polytechnic education experience.

## **OUR MISSION**

To provide learners with an applied education experience to gain the qualifications and skills they need to be productive in the workforce, continue with learning and contribute positively to the community.

# WHO ATTENDS THE POLYTECHNIC?



- Individuals just out of school wanting to gain qualifications or skills they need to get a job or career, or access further study;
- Individuals out of the workforce wanting to get qualifications or skills to get a job or career, or access further study;
- Individuals who are employed and want to gain qualifications or skills that are not related to their current employment;
- Individuals who are employed but are paying for their own training;
- Individuals who are self employed but want to gain



## **Polytechnic** is *quality* education

- Applied learning
- Flexible learning
- Supported learning
- Connected learning

**FOR WORKFORCE *FUTURES* FOR  
ADULTS AND DEVELOPING  
ADULTS.....**

# Distilling the Best of the Best: A POLYTECHNIC EXPERIENCE

*For Younger (15-19) Students:*

| Development and Learning Plan |   |                          |   |  |   |                     |
|-------------------------------|---|--------------------------|---|--|---|---------------------|
|                               |   |                          |   |  |   |                     |
| Vocational Qualification      | + | Education Subjects - TCE | + | Attested Employability Skills/Attributes Program – PBL | + | Work-based Learning |
|                               |   |                          |   |  |   |                     |
| Enrichment Program            |   |                          |   |  |   |                     |

# Distilling the Best of the Best: A POLYTECHNIC EXPERIENCE

*For Adults and Returning Students:*

|                                       |   |   |   |                     |   |  |
|---------------------------------------|---|---|---|---------------------|---|--|
| RPL and Learning Development Planning | + | TCE & Vocational Qualification (inc Skill Sets) | + | Work-based Learning | - | <b><u>OPTIONAL</u></b><br>Attested Employability Skills/Attributes – PBL |
|                                       |   |   |   |                     | - | Enrichment Program   |

# CONTACT



Belinda McLennan

Chief Executive Officer – Tasmanian Polytechnic

Email: [Belinda.Mclennan@polytechnic.tas.edu.au](mailto:Belinda.Mclennan@polytechnic.tas.edu.au)

Web: [www.polytechnic.tas.edu.au](http://www.polytechnic.tas.edu.au)